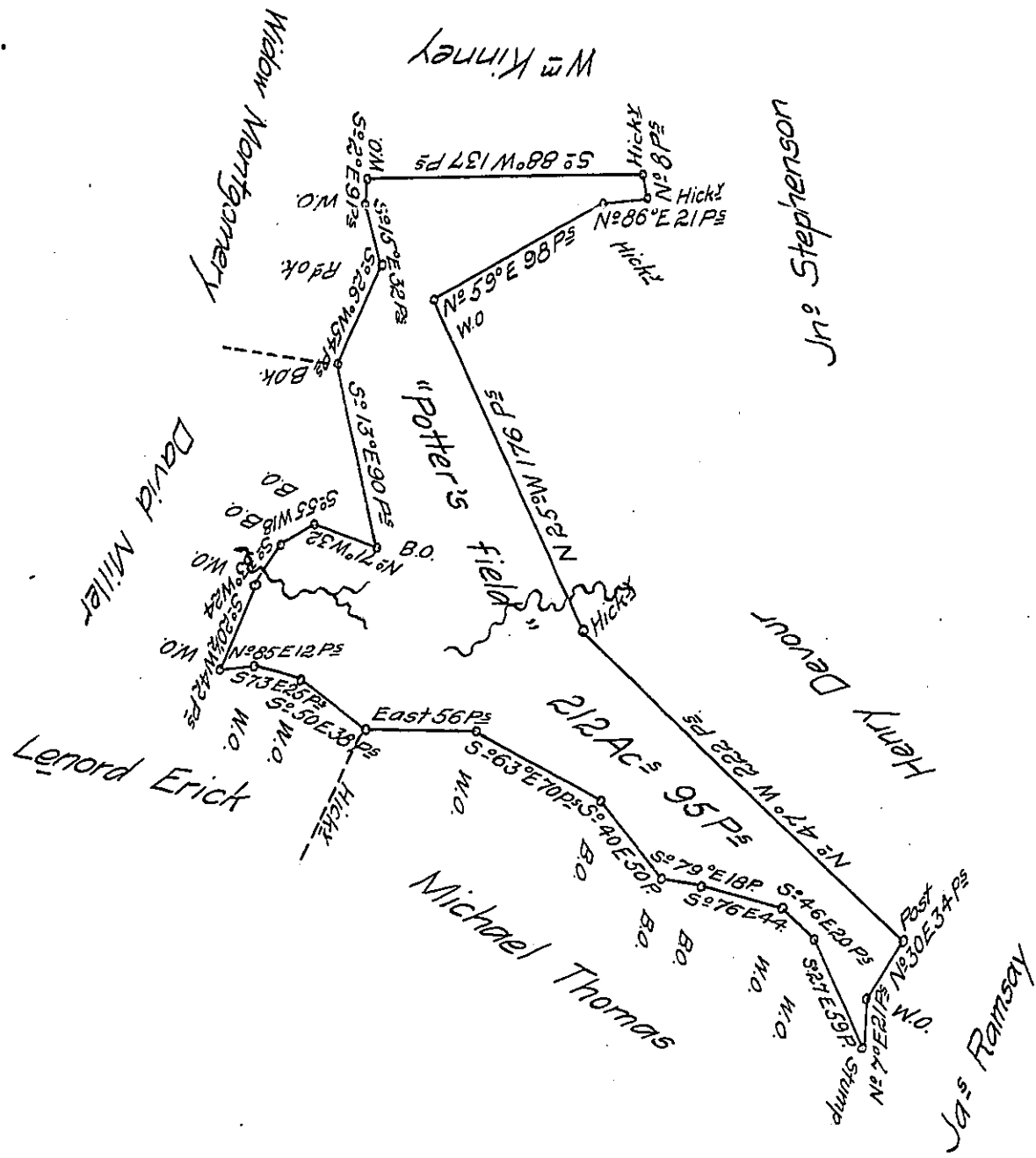


FORM NO. 1.



A Draught of a Survey situate on the Waters of Mingo Creek in Washington County, containing 212 Ac^s 95 P^s and y^e usual Allow^{ce} for Roads &c. executed June y^e 2^d 1787 in Pursuance of a Warrant granted to Jehu Stephens for 50 Ac^s dated March y^e 19th 1787.

Presley Nevill } Dep. S^{rs}
 Matt^w Ritchie }

Note. this Survey was made in the time of M^r Lukens, who countenanced large Surveys on small Warrants - it is clear of Dispute -

Dan^l Brodhead Esq^t

IN TESTIMONY that the above is a copy of the original remaining on file in the Department of Internal Affairs of Pennsylvania, made conformably to an Act of Assembly approved the 16th day of February, 1833, I have hereunto set my Hand and caused the Seal of said Department to be affixed at Harrisburg, this.....fifteenth.....day of.....October.....1906.

Loach R. Brown
 Secretary of Internal Affairs.